

Fore Street, Newlyn, Penzance, TR18 5JT

Approximate Area = 2762 sq ft / 256.5 sq m (excludes void)

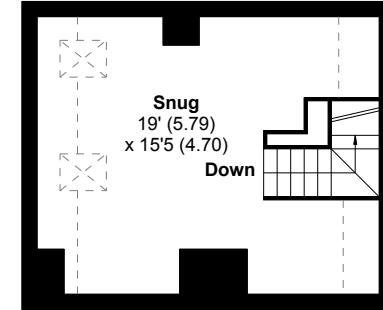
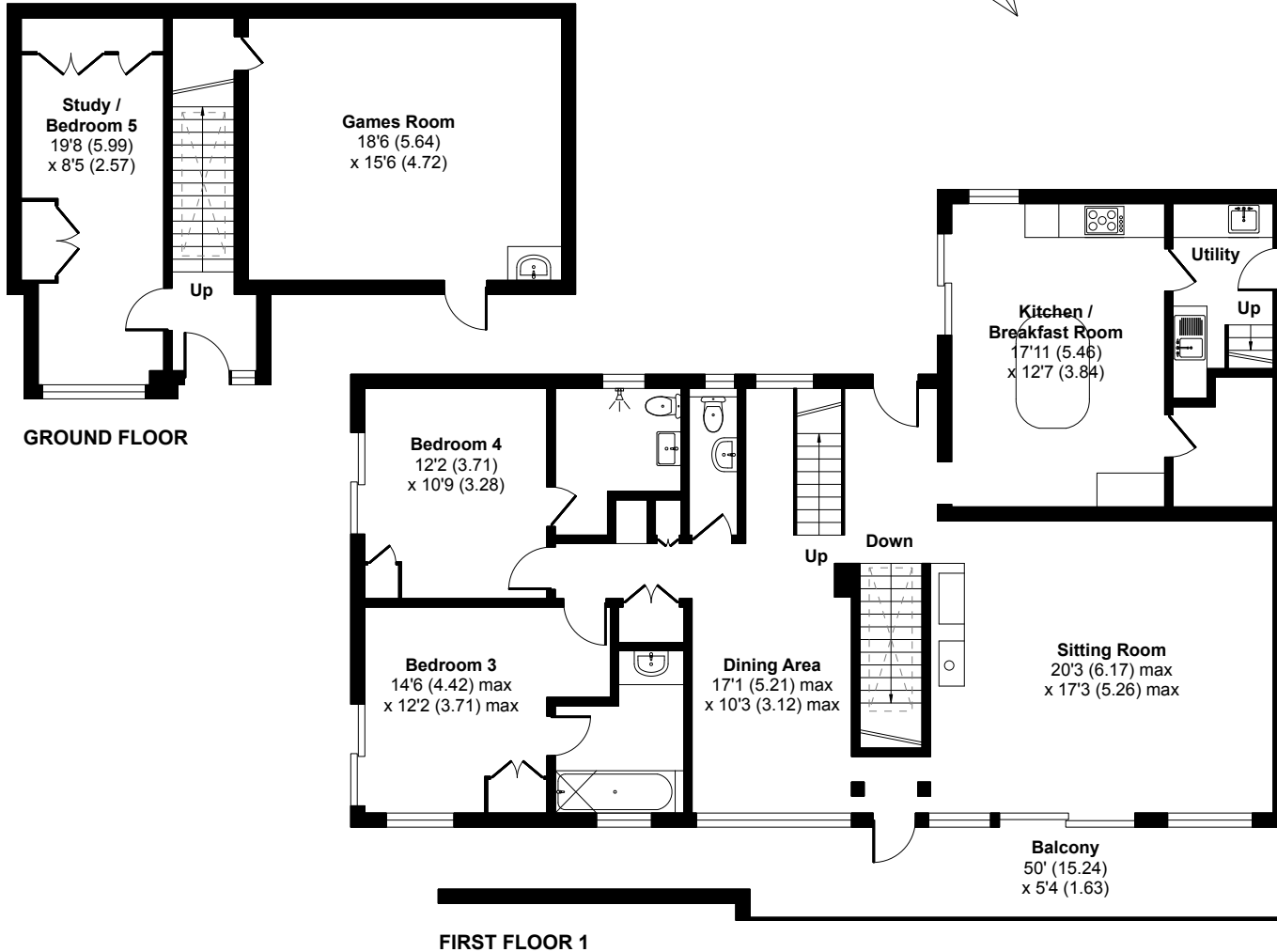
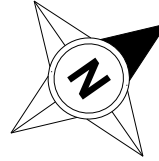
Limited Use Area(s) = 55 sq ft / 5.1 sq m

Outbuilding = 286 sq ft / 26.5 sq m

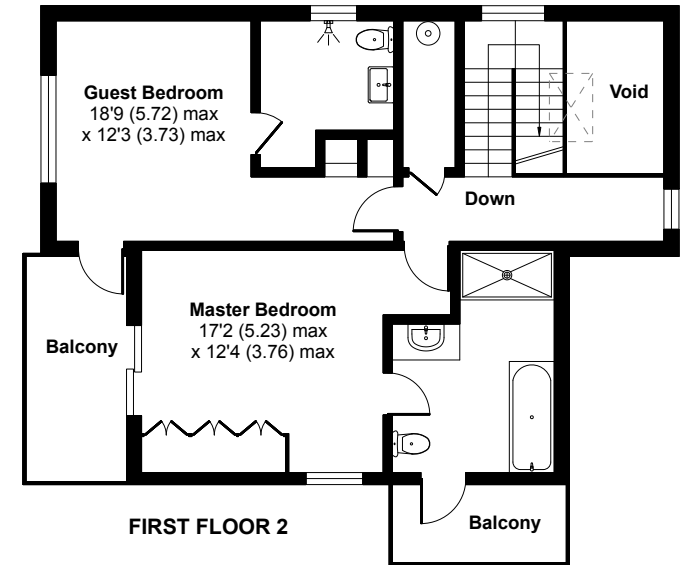
Total = 3103 sq ft / 288.1 sq m

For identification only - Not to scale

Denotes restricted head height



FIRST FLOOR 3



FIRST FLOOR 2